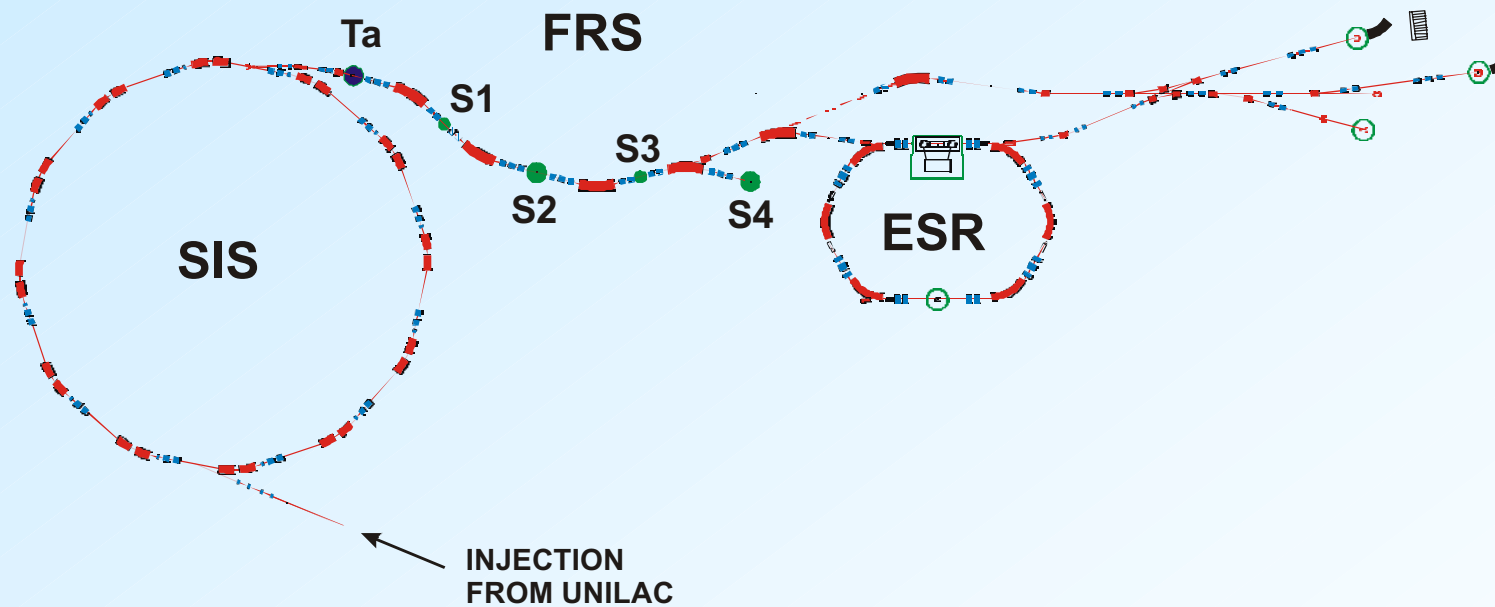


New Developments at the FRS

Martin Winkler
for the FRS group
GSI, 12.2.2003

- Upgrade of the S1 area
- Plans for the target area upgrade
- Multi-purpose chamber @ S2
- More ongoing activities ...

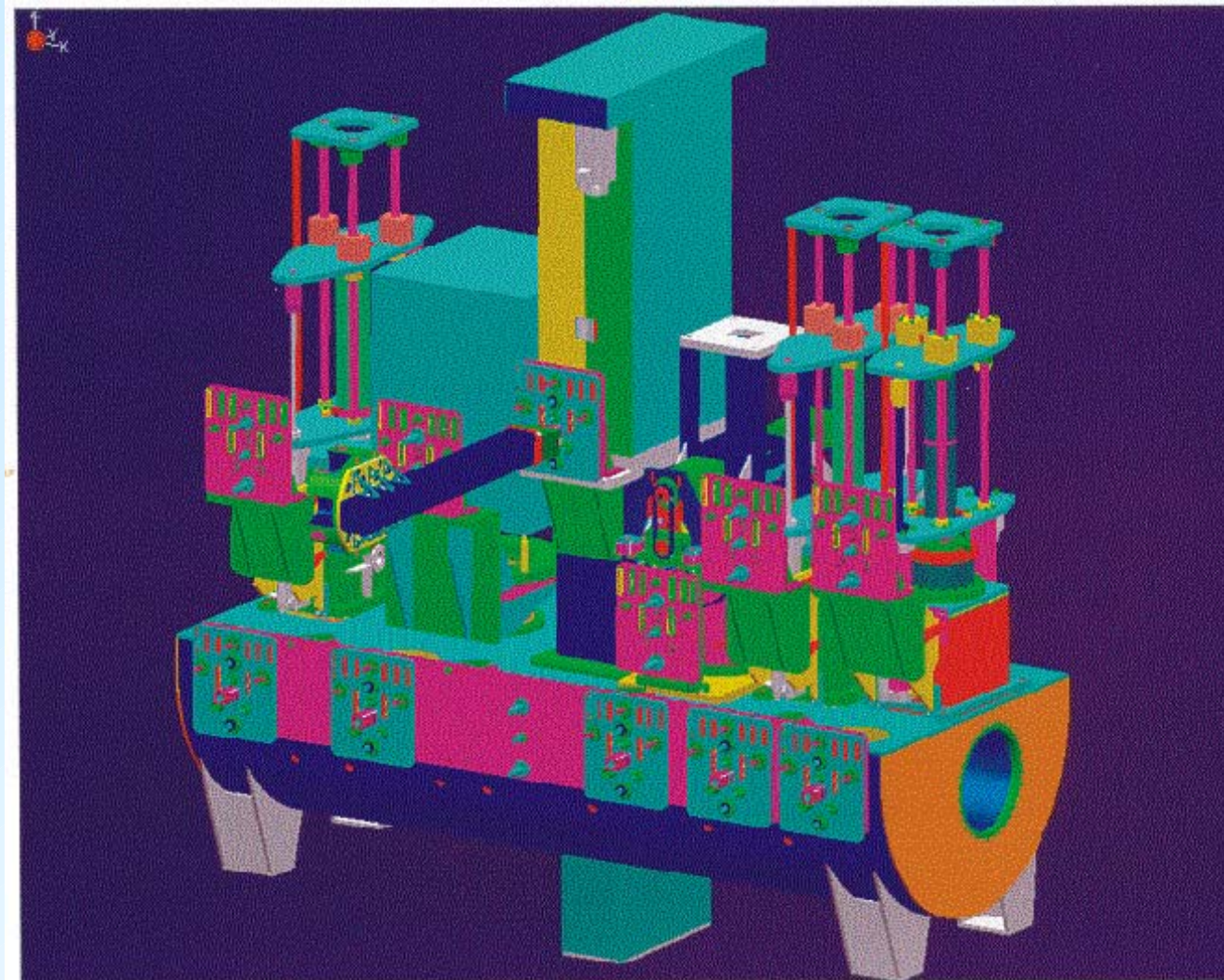
Present Secondary Beam Facility at GSI



Old S1 Area



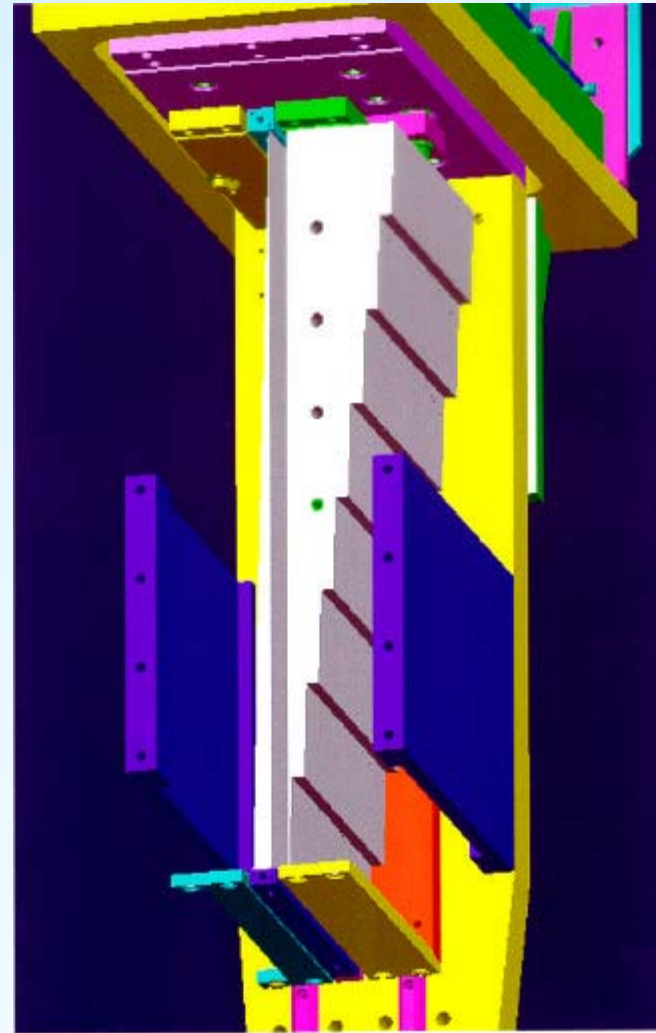
New S1 Chamber (FEM)



Robot Takes Interface Panel (FEM)



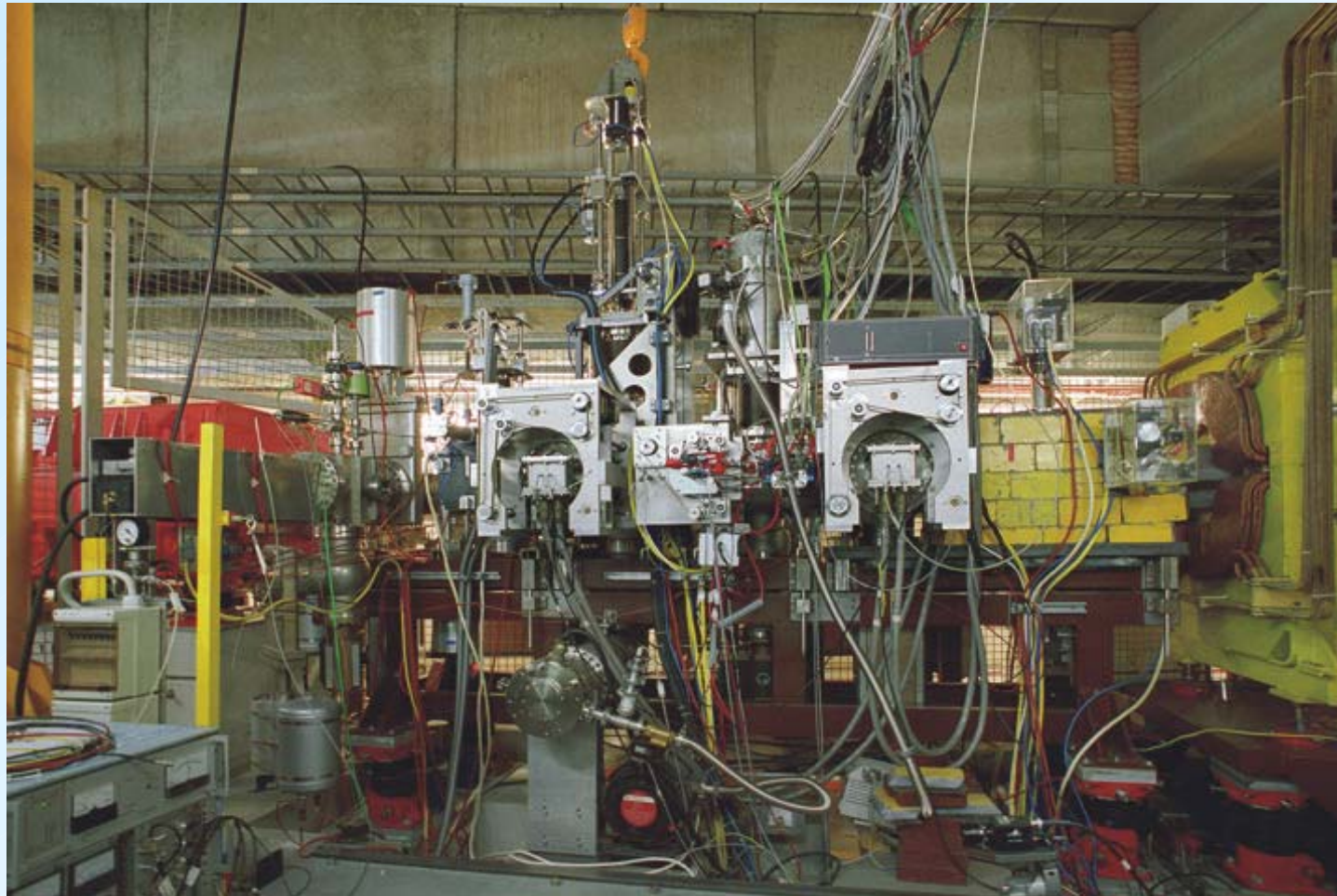
New S1 Degradation Station (FEM)



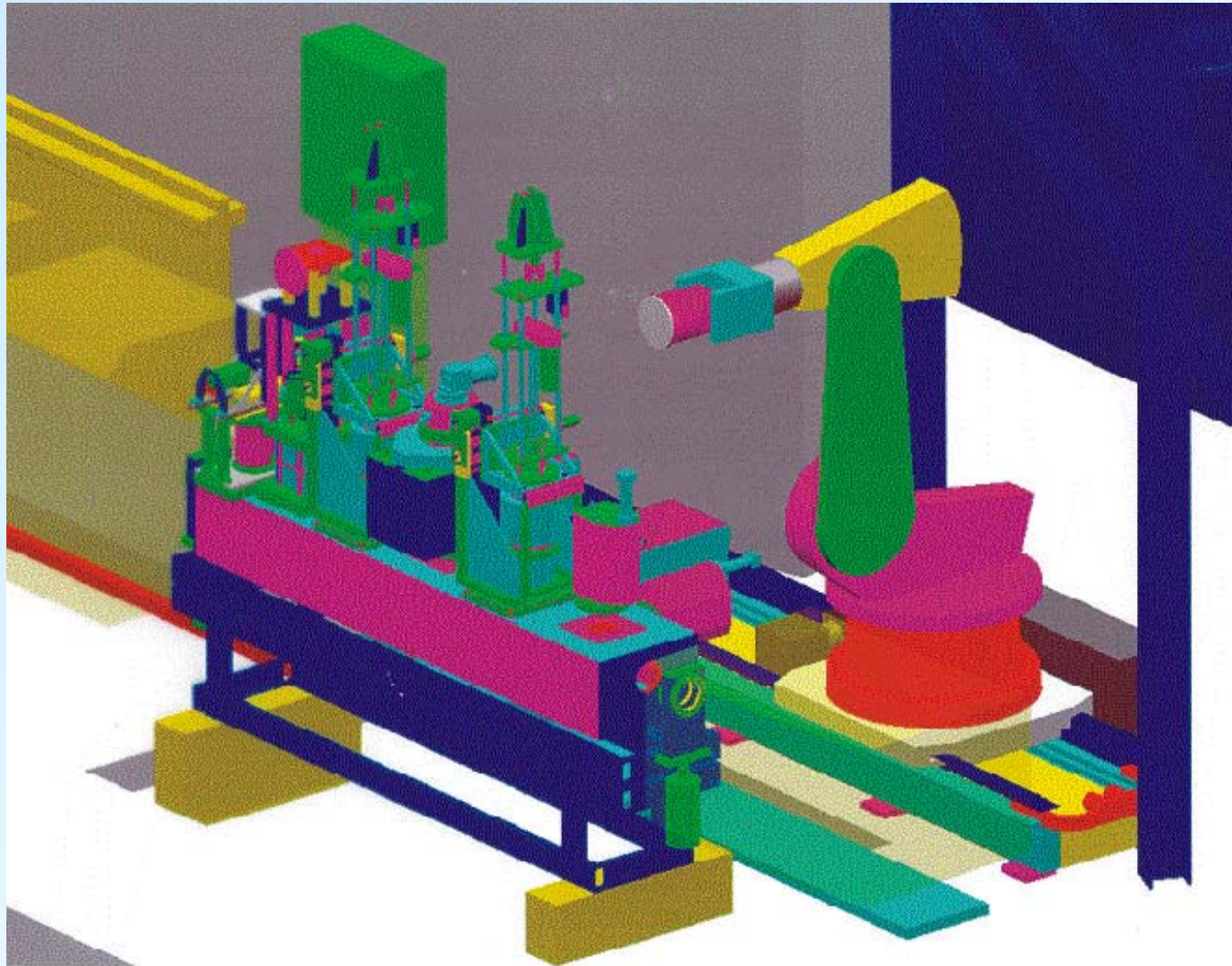
New S1 Chamber and Robot



Target Area: How it Looks Today...



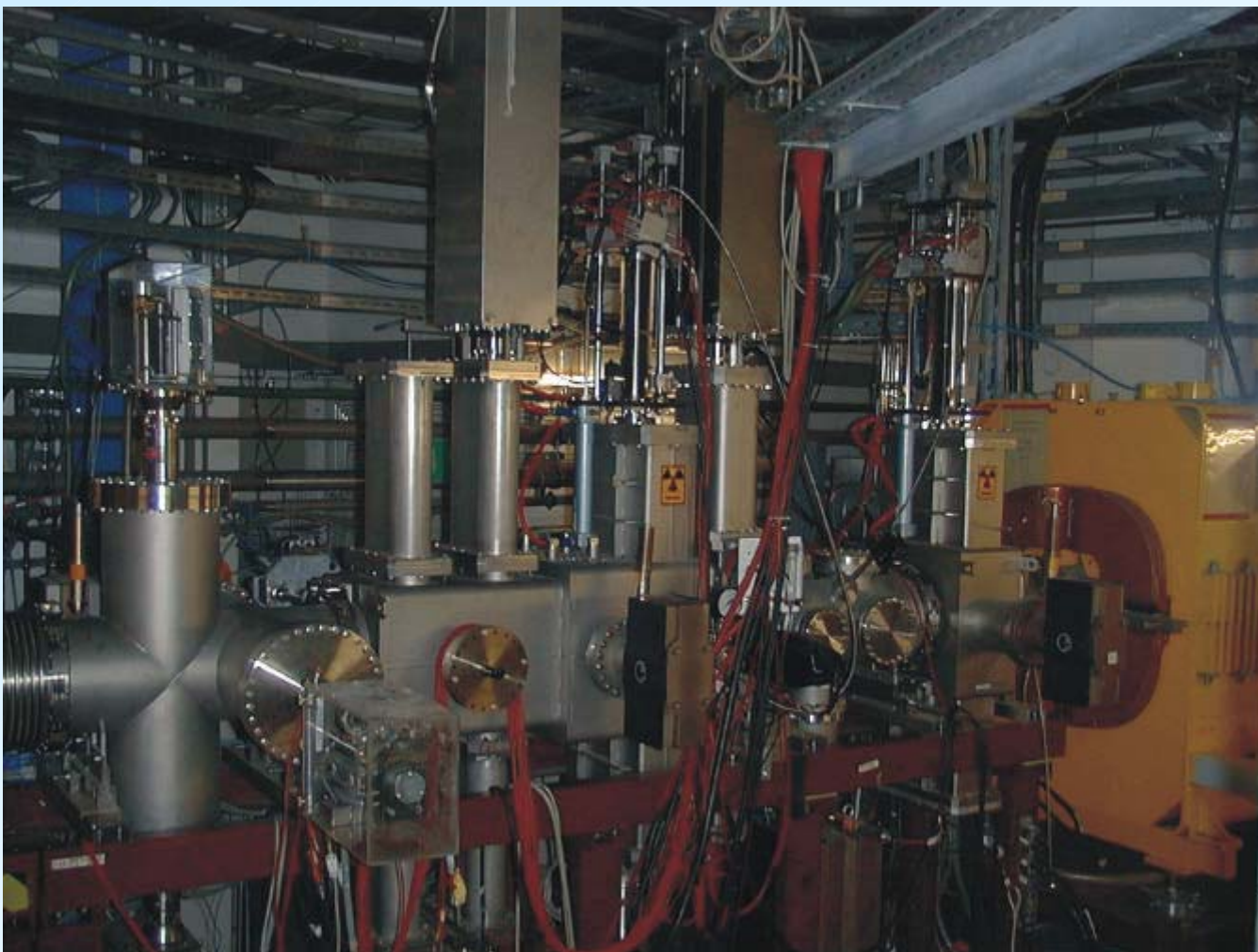
... and Plans for the Future



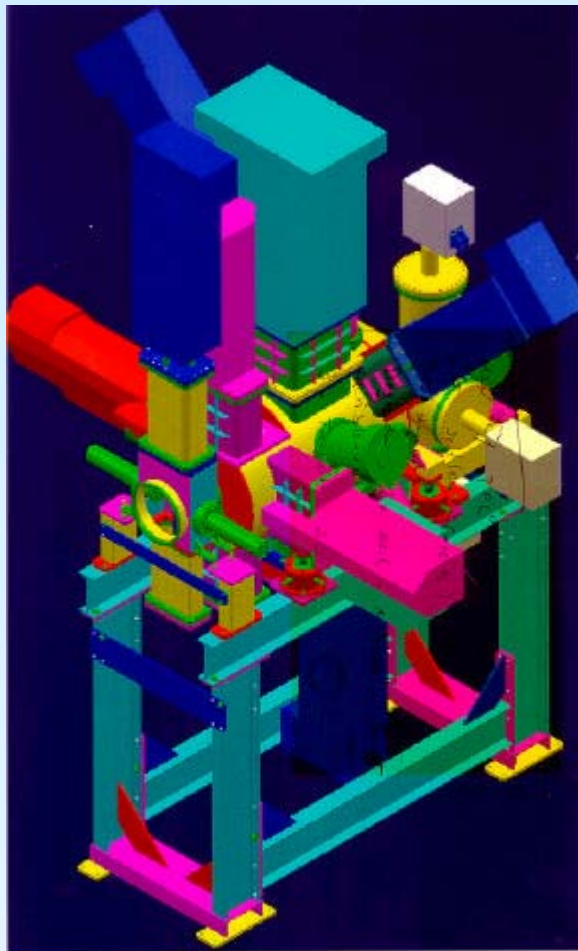
Target Robot in Front of FRS Messhütte



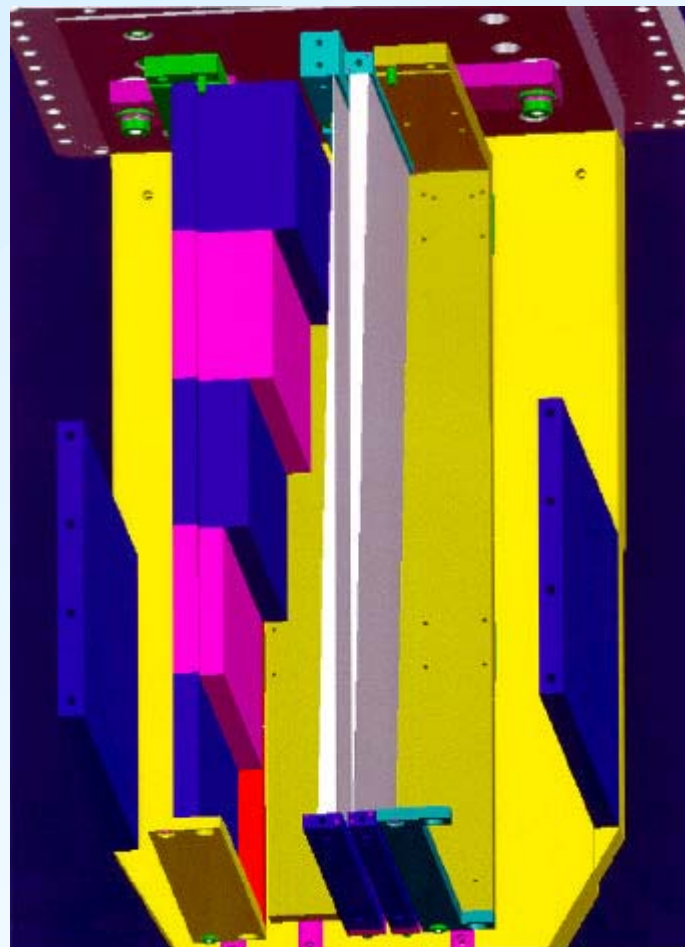
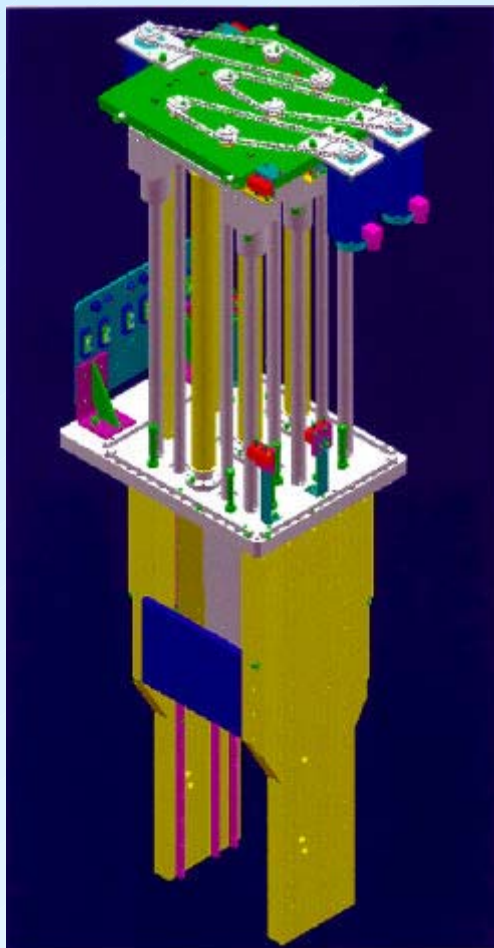
S2 Area: How It Looks Today



New S2 Multi-Purpose Chamber



New S2 Degradation Station (FEM)

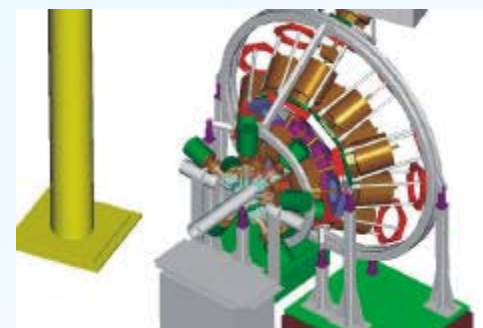
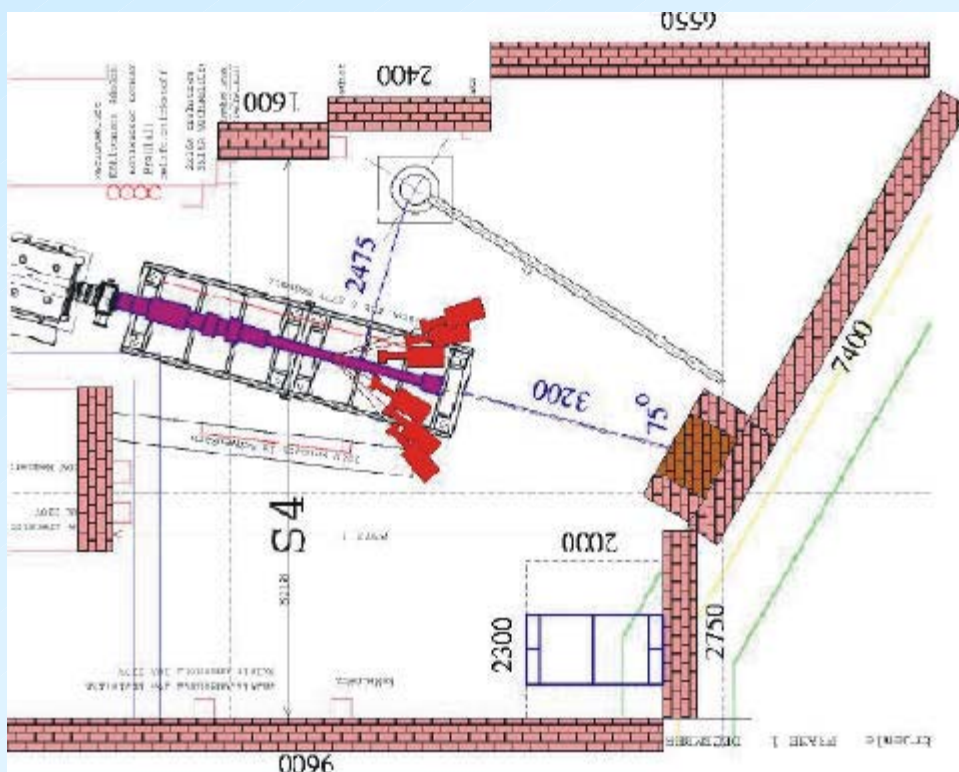


More Activities at the FRS

- S4 area: preparation for upcoming experiments (RISING, Ion catcher,...)
- Test of S3 achromatic mode
- Installation of a new gas-filling system
- Simulation software (LISE,...)
- GO4



Preparation for RISING @ S4



S3 Achromatic Mode

